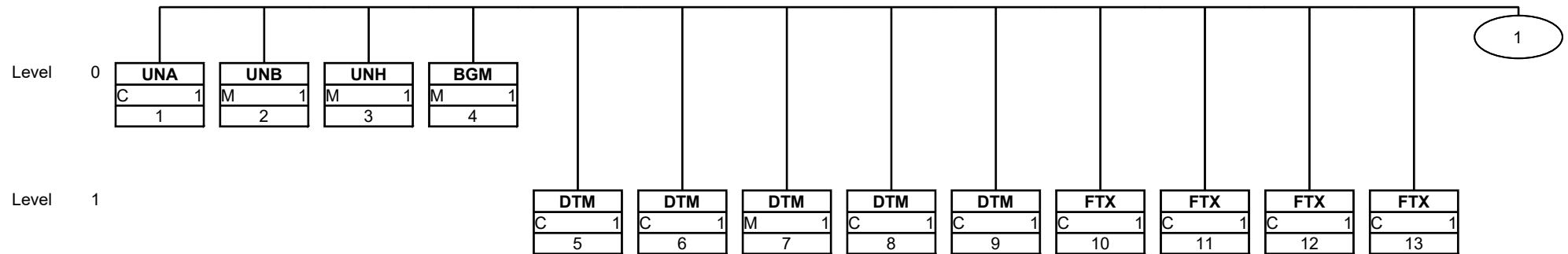
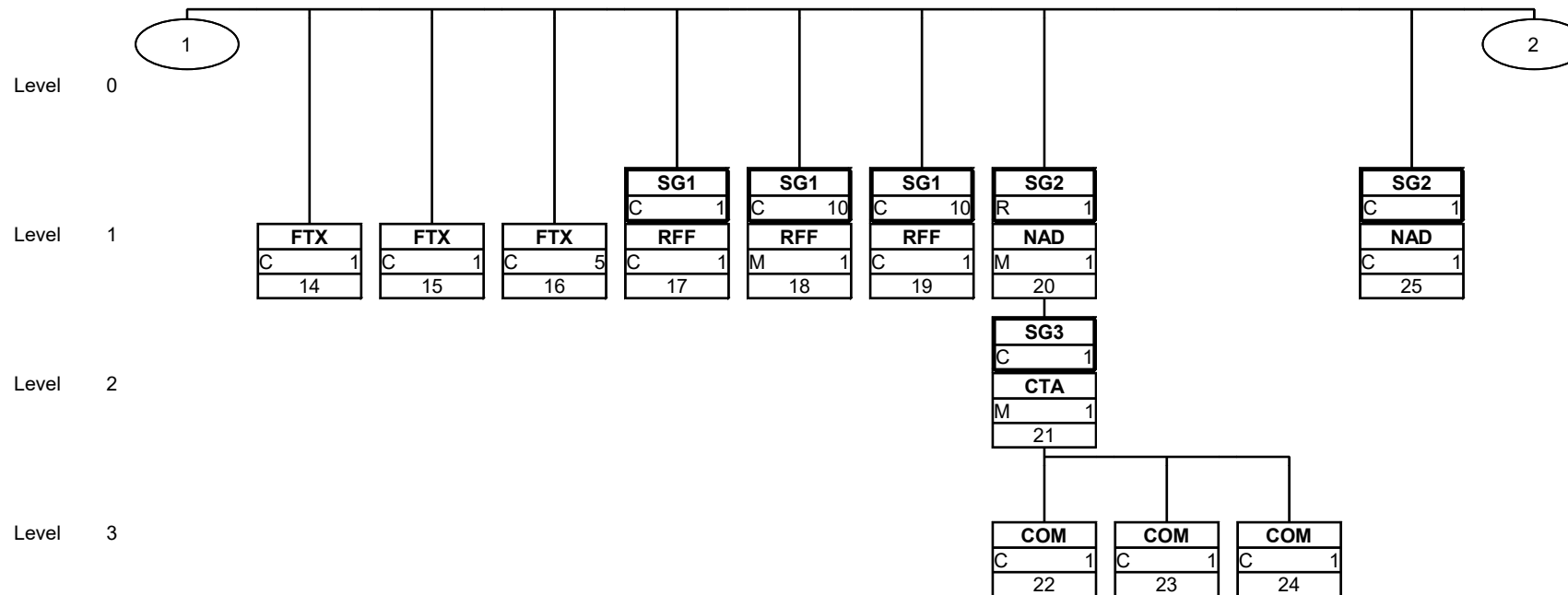


Branching diagram



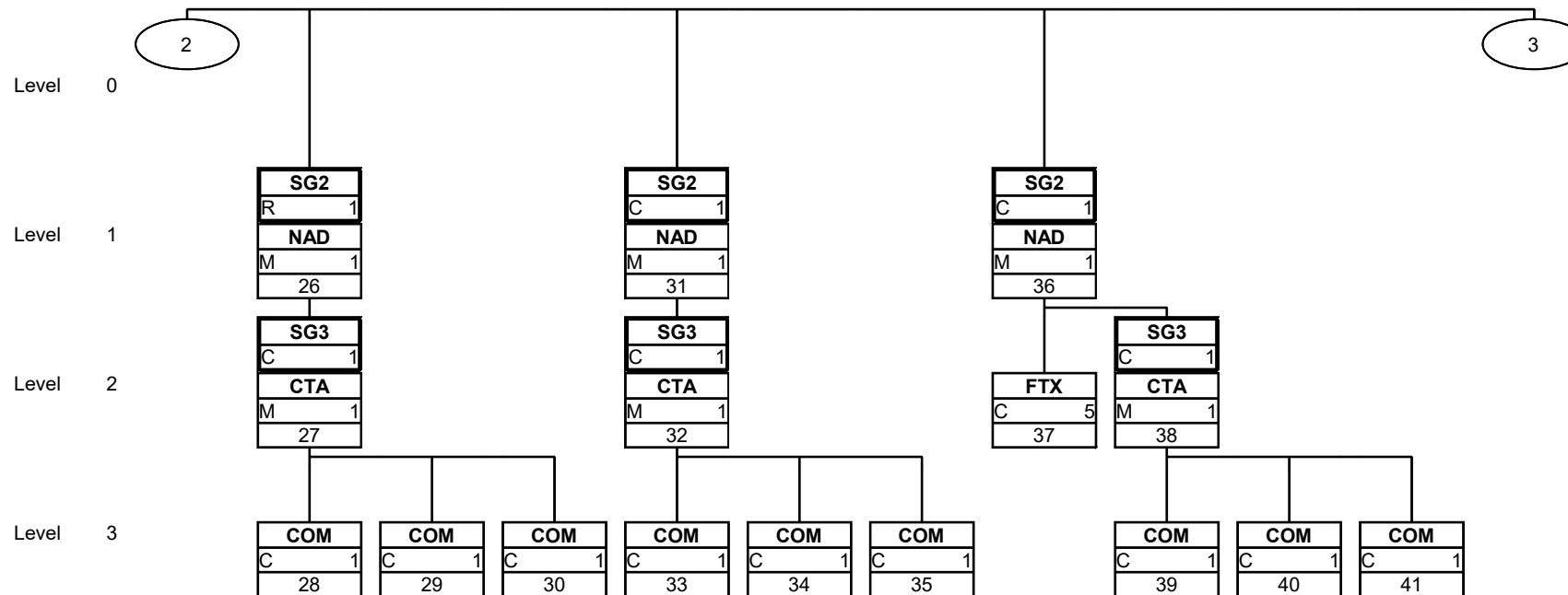
This is a diagram illustrating the structure of a message. Each version of a segment or of a segment group documented in the Guide is listed exactly once in this diagram. The letters M and respectively R or C indicate the status of application: Mandatory/Required (M), respectively Conditional (C). D stands for Depending, "depending on" (for details see comment). In "Formal Description of Segment" X stands for "These information doesn't evaluate from Seeburger". The number underneath represents the serial segment number under which the respective segment is specified in the Guide.

Branching diagram



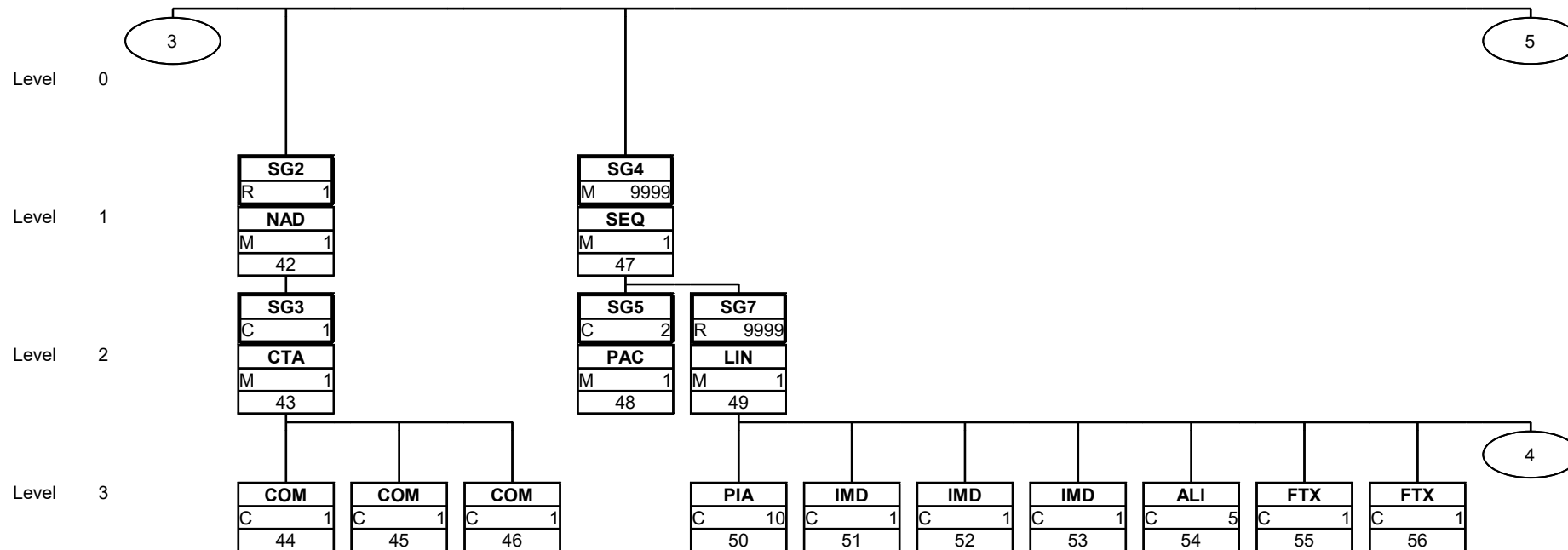
This is a diagram illustrating the structure of a message. Each version of a segment or of a segment group documented in the Guide is listed exactly once in this diagram. The letters M and respectively R or C indicate the status of application: Mandatory/Required (M), respectively Conditional (C). D stands for Depending, "depending on" (for details see comment). In "Formal Description of Segemt" X stands for "These information doesn't evaluate from Seeburger". The number underneeds represents the serial segment number under which the respective segment is specified in the Guide.

Branching diagram



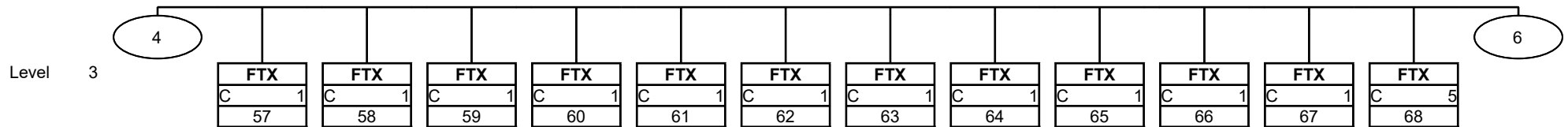
This is a diagram illustrating the structure of a message. Each version of a segment or of a segment group documented in the Guide is listed exactly once in this diagram. The letters M and respectively R or C indicate the status of application: Mandatory/Required (M), respectively Conditional (C). D stands for Depending, "depending on" (for details see comment). In "Formal Description of Segemt" X stands for "These information doesn't evaluate from Seeburger". The number underneeds represents the serial segment number under which the respective segment is specified in the Guide.

Branching diagram



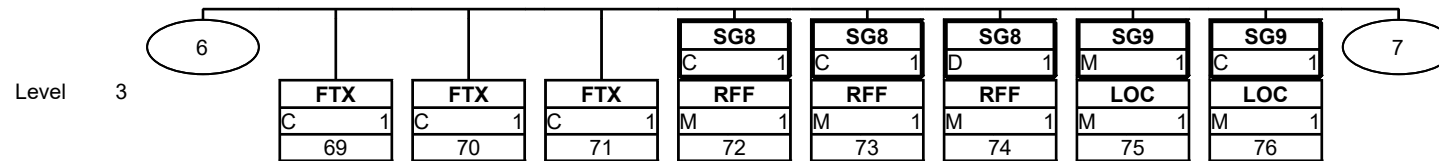
This is a diagram illustrating the structure of a message. Each version of a segment or of a segment group documented in the Guide is listed exactly once in this diagram. The letters M and respectively R or C indicate the status of application: Mandatory/Required (M), respectively Conditional (C). D stands for Depending, "depending on" (for details see comment). In "Formal Description of Segemt" X stands for "These information doesn't evaluate from Seeburger". The number underneeds represents the serial segment number under which the respective segment is specified in the Guide.

Branching diagram



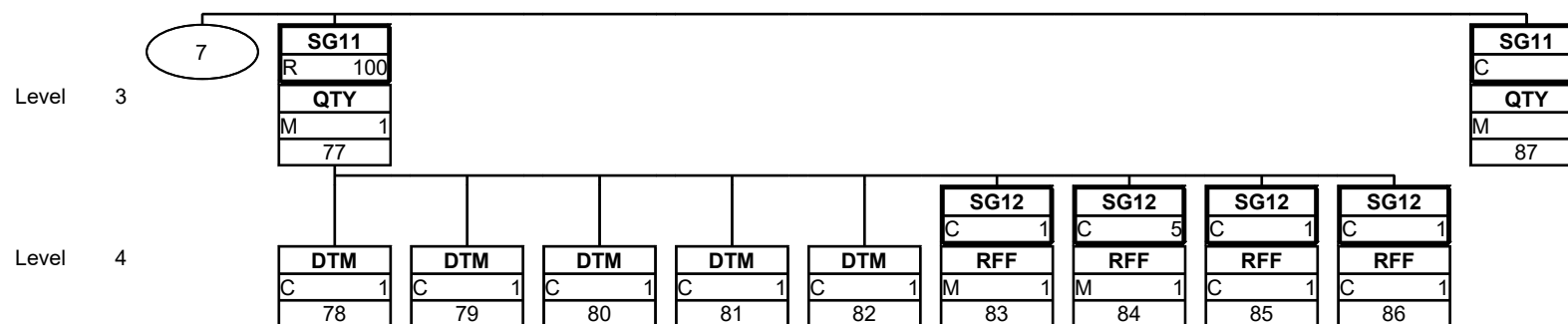
This is a diagram illustrating the structure of a message. Each version of a segment or of a segment group documented in the Guide is listed exactly once in this diagram. The letters M and respectively R or C indicate the status of application: Mandatory/Required (M), respectively Conditional (C). D stands for Depending, "depending on" (for details see comment). In "Formal Description of Segment" X stands for "These information doesn't evaluate from Seeburger". The number underneath represents the serial segment number under which the respective segment is specified in the Guide.

Branching diagram



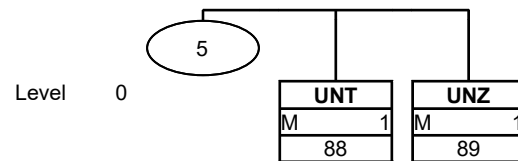
This is a diagram illustrating the structure of a message. Each version of a segment or of a segment group documented in the Guide is listed exactly once in this diagram. The letters M and respectively R or C indicate the status of application: Mandatory/Required (M), respectively Conditional (C). D stands for Depending, "depending on" (for details see comment). In "Formal Description of Segment" X stands for "These information doesn't evaluate from Seeburger". The number underneath represents the serial segment number under which the respective segment is specified in the Guide.

Branching diagram



This is a diagram illustrating the structure of a message. Each version of a segment or of a segment group documented in the Guide is listed exactly once in this diagram. The letters M and respectively R or C indicate the status of application: Mandatory/Required (M), respectively Conditional (C). D stands for Depending, "depending on" (for details see comment). In "Formal Description of Segment" X stands for "These information doesn't evaluate from Seeburger". The number underneath represents the serial segment number under which the respective segment is specified in the Guide.

Branching diagram



This is a diagram illustrating the structure of a message. Each version of a segment or of a segment group documented in the Guide is listed exactly once in this diagram. The letters M and respectively R or C indicate the status of application: Mandatory/Required (M), respectively Conditional (C). D stands for Depending, "depending on" (for details see comment). In "Formal Description of Segment" X stands for "These information doesn't evaluate from Seeburger". The number underneath represents the serial segment number under which the respective segment is specified in the Guide.