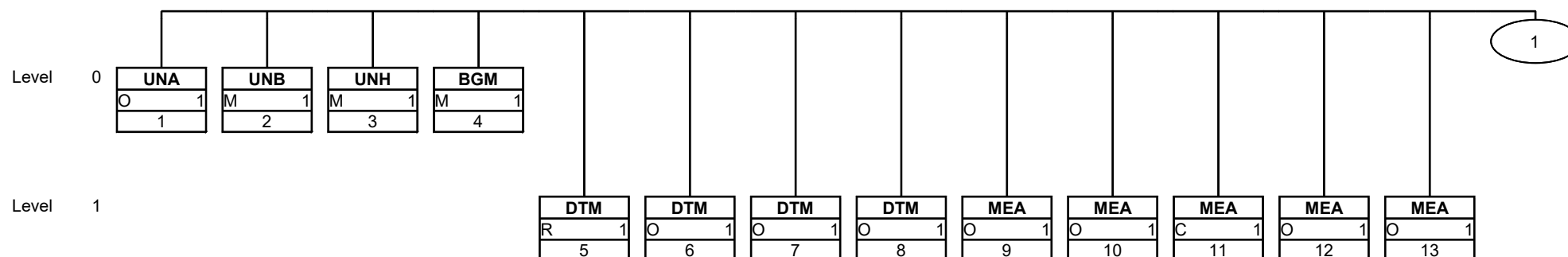
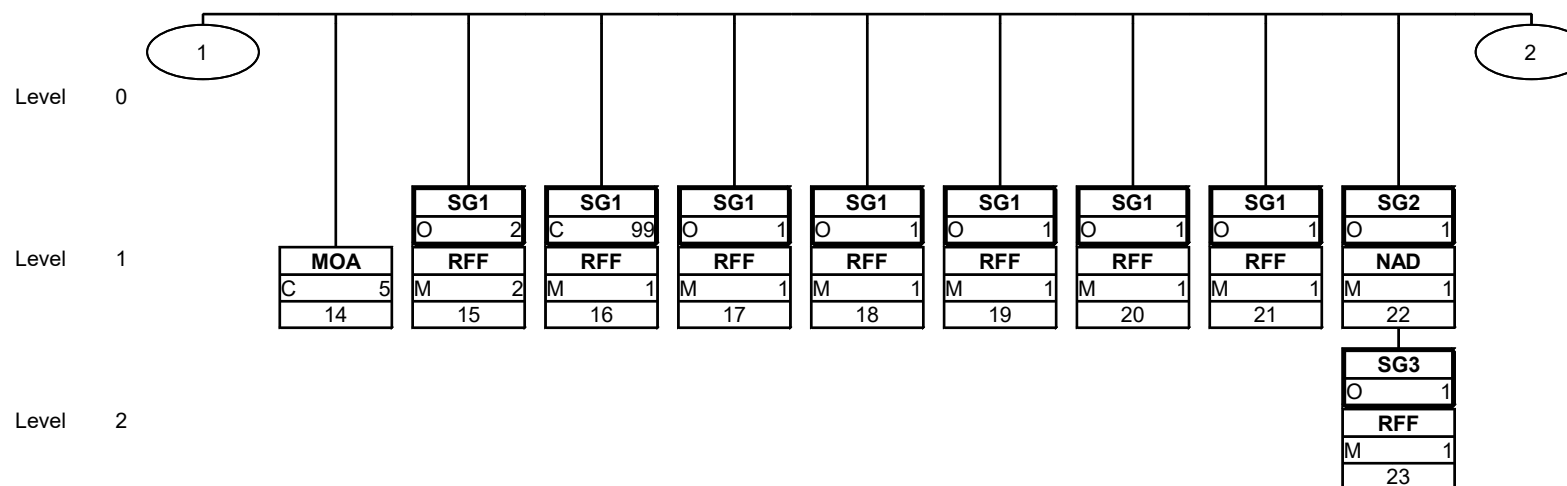


## Branching diagram



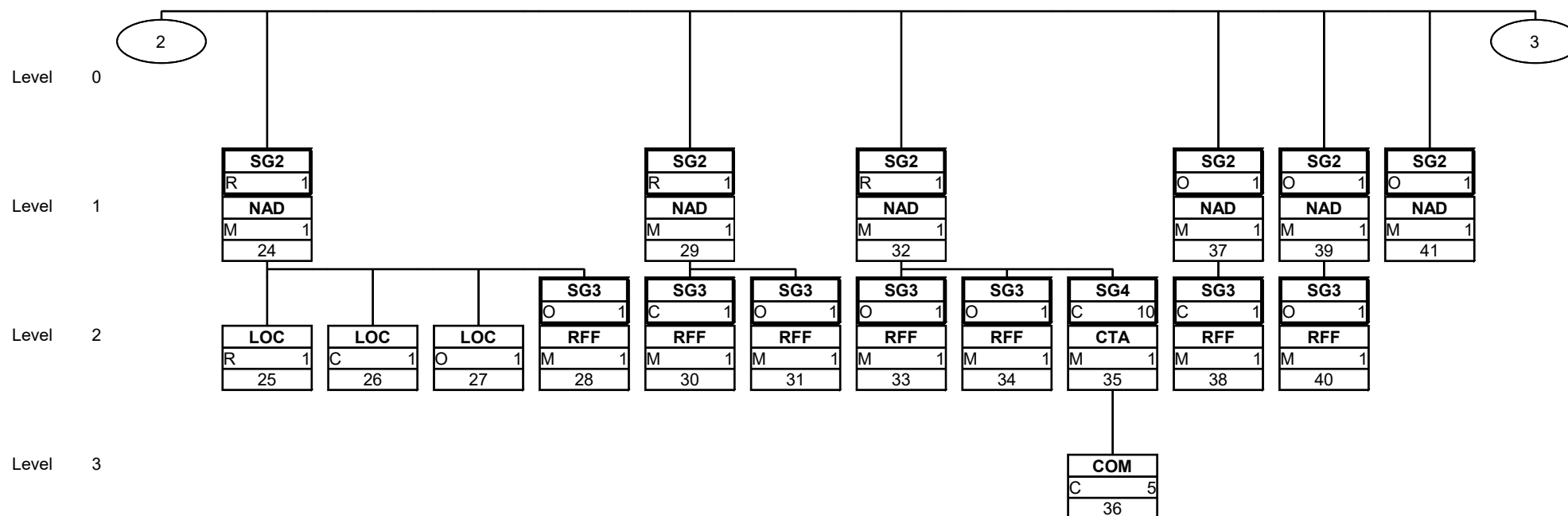
This is a diagram illustrating the structure of a message. Each version of a segment or of a segment group documented in the Guide is listed exactly once in this diagram. The letters M and respectively R or C indicate the status of application: Mandatory/Required (M), respectively Conditional (C). D stands for Depending, "depending on" (for details see comment).

## Branching diagram



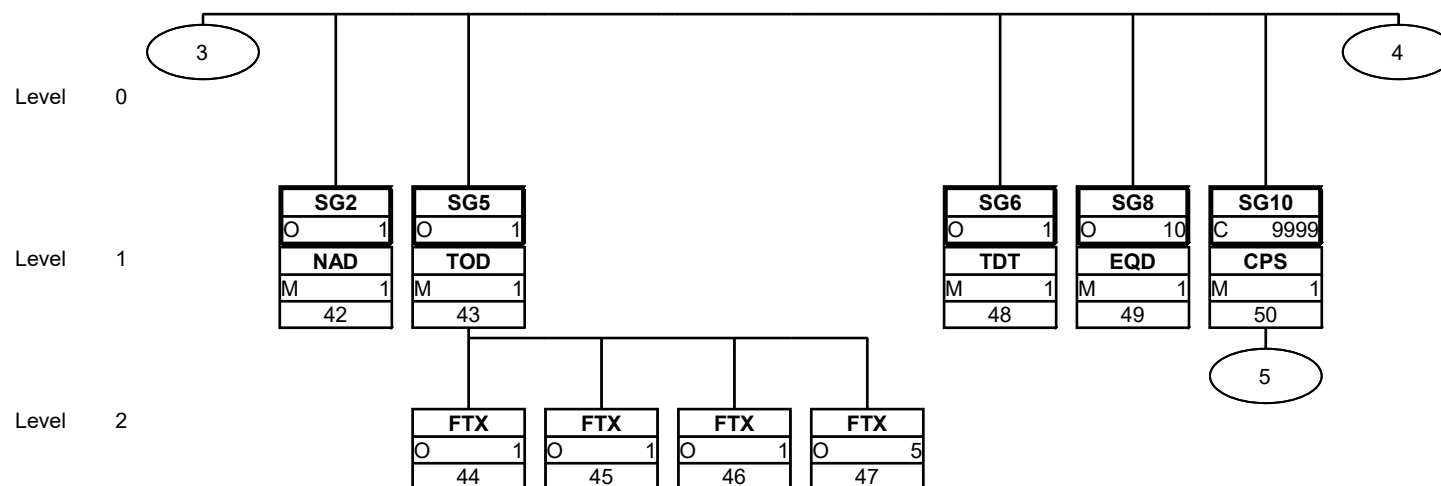
This is a diagram illustrating the structure of a message. Each version of a segment or of a segment group documented in the Guide is listed exactly once in this diagram. The letters M and respectively R or C indicate the status of application: Mandatory/Required (M), respectively Conditional (C). D stands for Depending, "depending on" (for details see comment).

## Branching diagram



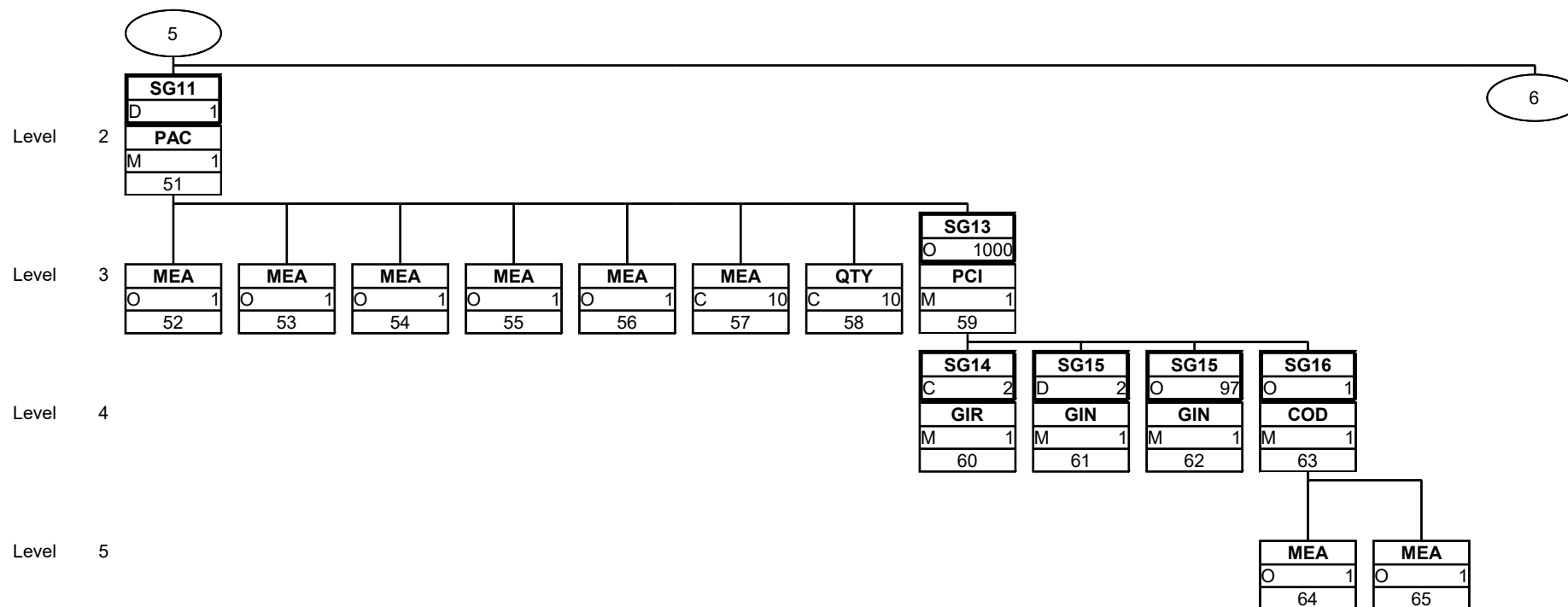
This is a diagram illustrating the structure of a message. Each version of a segment or of a segment group documented in the Guide is listed exactly once in this diagram. The letters M and respectively R or C indicate the status of application: Mandatory/Required (M), respectively Conditional (C). D stands for Depending, "depending on" (for details see comment).

## Branching diagram



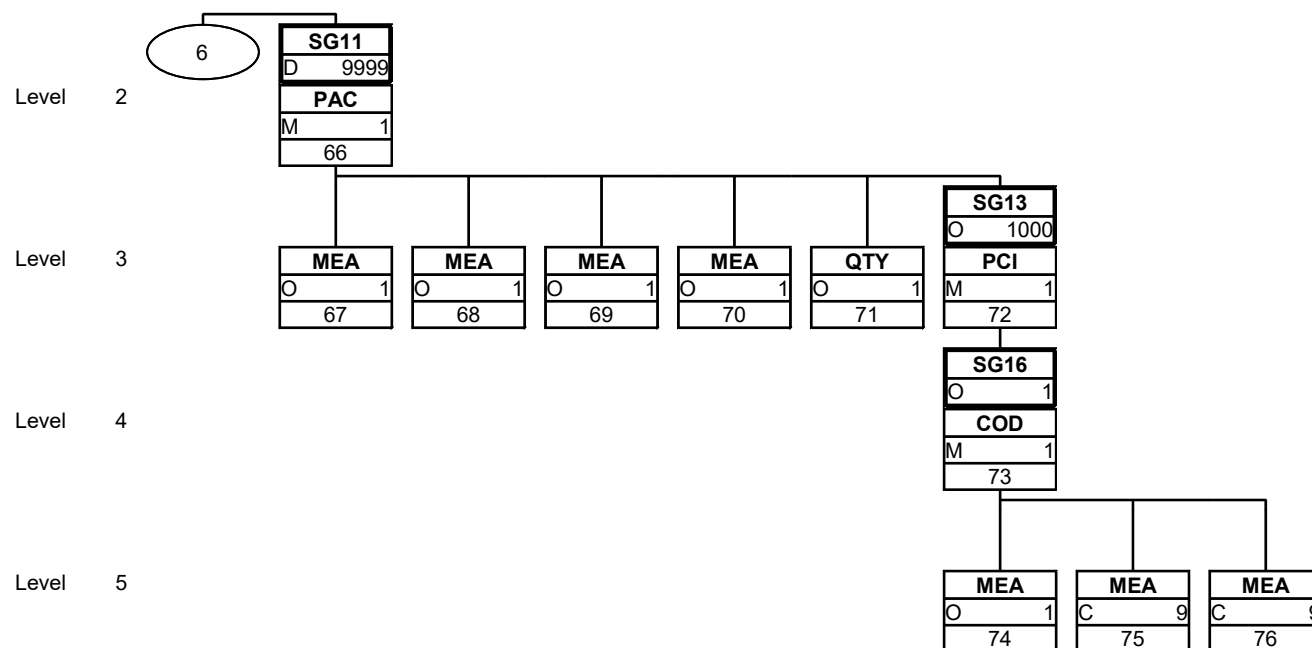
This is a diagram illustrating the structure of a message. Each version of a segment or of a segment group documented in the Guide is listed exactly once in this diagram. The letters M and respectively R or C indicate the status of application: Mandatory/Required (M), respectively Conditional (C). D stands for Depending, "depending on" (for details see comment).

## Branching diagram



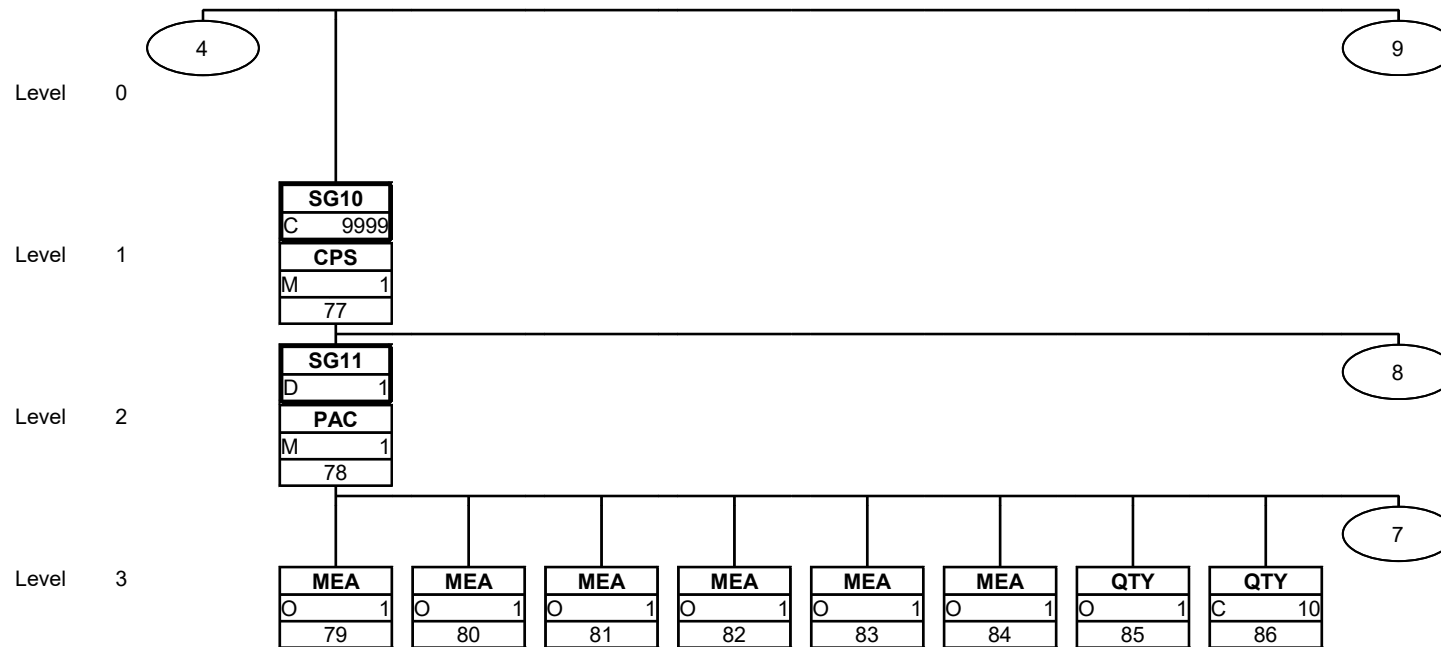
This is a diagram illustrating the structure of a message. Each version of a segment or of a segment group documented in the Guide is listed exactly once in this diagram. The letters M and respectively R or C indicate the status of application: Mandatory/Required (M), respectively Conditional (C). D stands for Depending, "depending on" (for details see comment).

## Branching diagram



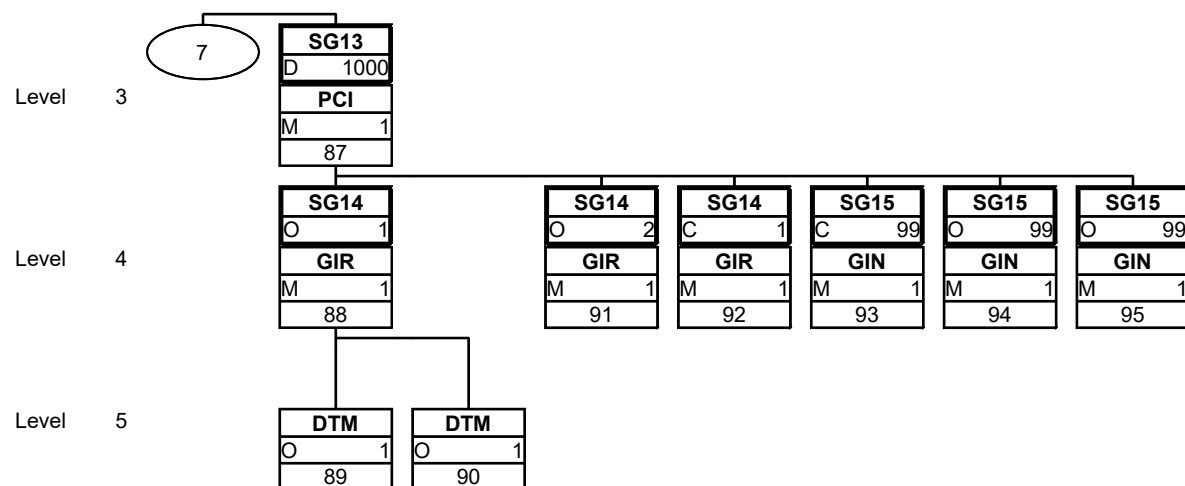
This is a diagram illustrating the structure of a message. Each version of a segment or of a segment group documented in the Guide is listed exactly once in this diagram. The letters M and respectively R or C indicate the status of application: Mandatory/Required (M), respectively Conditional (C). D stands for Depending, "depending on" (for details see comment).

## Branching diagram



This is a diagram illustrating the structure of a message. Each version of a segment or of a segment group documented in the Guide is listed exactly once in this diagram. The letters M and respectively R or C indicate the status of application: Mandatory/Required (M), respectively Conditional (C). D stands for Depending, "depending on" (for details see comment).

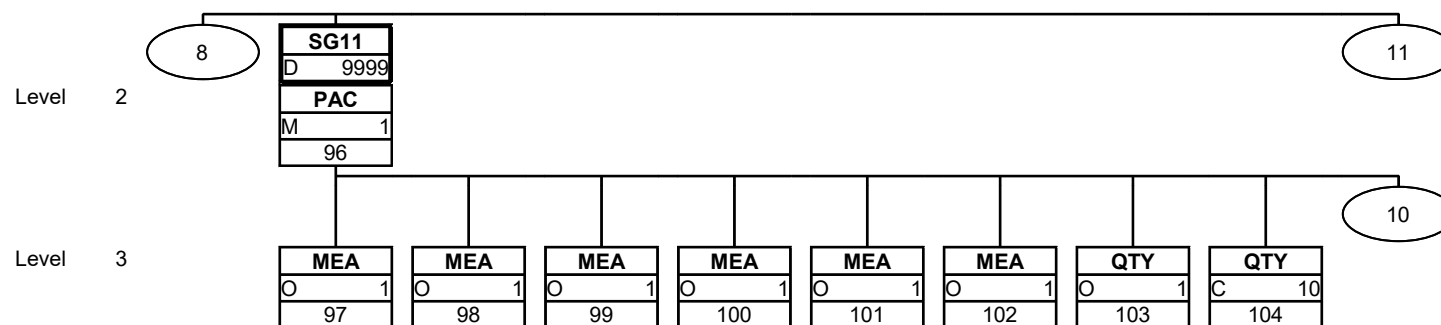
## Branching diagram



This is a diagram illustrating the structure of a message. Each version of a segment or of a segment group documented in the Guide is listed exactly once in this diagram. The letters M and respectively R or C indicate the status of application: Mandatory/Required (M), respectively Conditional (C). D stands for Depending, "depending on" (for details see comment).

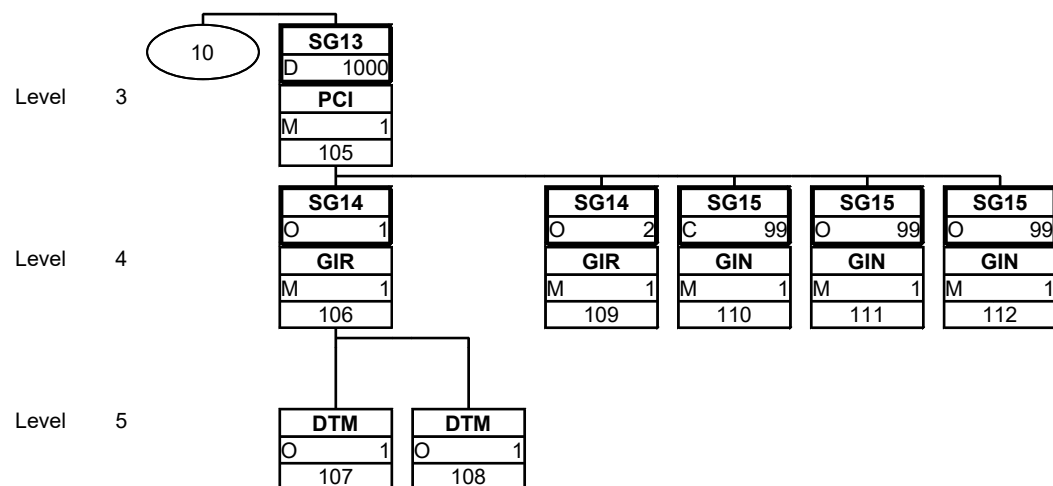


## Branching diagram



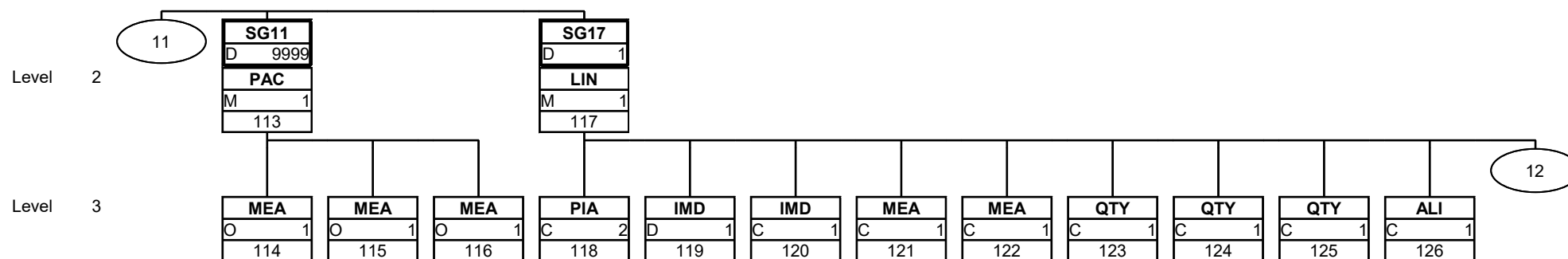
This is a diagram illustrating the structure of a message. Each version of a segment or of a segment group documented in the Guide is listed exactly once in this diagram. The letters M and respectively R or C indicate the status of application: Mandatory/Required (M), respectively Conditional (C). D stands for Depending, "depending on" (for details see comment).

## Branching diagram



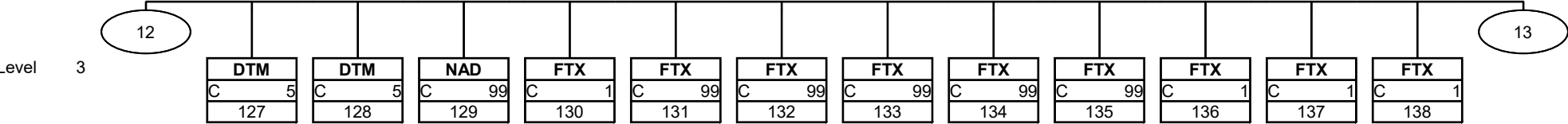
This is a diagram illustrating the structure of a message. Each version of a segment or of a segment group documented in the Guide is listed exactly once in this diagram. The letters M and respectively R or C indicate the status of application: Mandatory/Required (M), respectively Conditional (C). D stands for Depending, "depending on" (for details see comment).

## Branching diagram



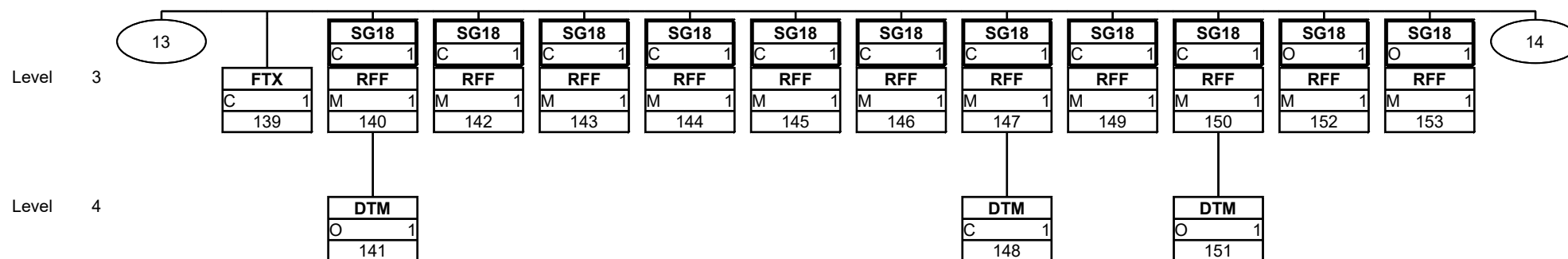
This is a diagram illustrating the structure of a message. Each version of a segment or of a segment group documented in the Guide is listed exactly once in this diagram. The letters M and respectively R or C indicate the status of application: Mandatory/Required (M), respectively Conditional (C). D stands for Depending, "depending on" (for details see comment).

Branching diagram



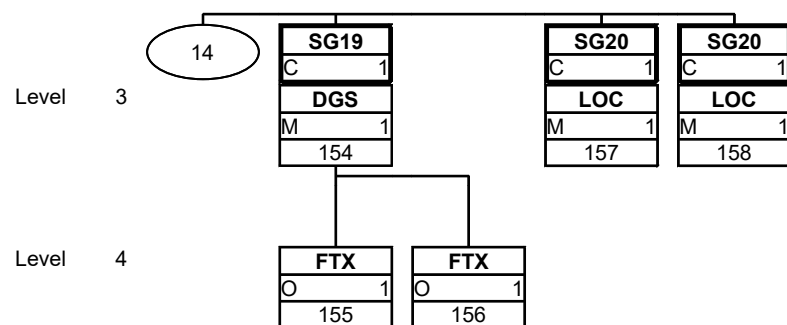
This is a diagram illustrating the structure of a message. Each version of a segment or of a segment group documented in the Guide is listed exactly once in this diagram. The letters M and respectively R or C indicate the status of application: Mandatory/Required (M), respectively Conditional (C). D stands for Depending, "depending on" (for details see comment).

## Branching diagram



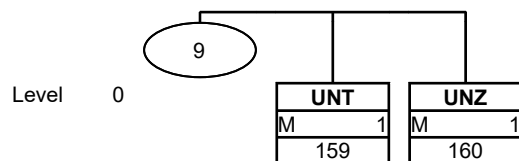
This is a diagram illustrating the structure of a message. Each version of a segment or of a segment group documented in the Guide is listed exactly once in this diagram. The letters M and respectively R or C indicate the status of application: Mandatory/Required (M), respectively Conditional (C). D stands for Depending, "depending on" (for details see comment).

## Branching diagram



This is a diagram illustrating the structure of a message. Each version of a segment or of a segment group documented in the Guide is listed exactly once in this diagram. The letters M and respectively R or C indicate the status of application: Mandatory/Required (M), respectively Conditional (C). D stands for Depending, "depending on" (for details see comment).

## Branching diagram



This is a diagram illustrating the structure of a message. Each version of a segment or of a segment group documented in the Guide is listed exactly once in this diagram. The letters M and respectively R or C indicate the status of application: Mandatory/Required (M), respectively Conditional (C). D stands for Depending, "depending on" (for details see comment).